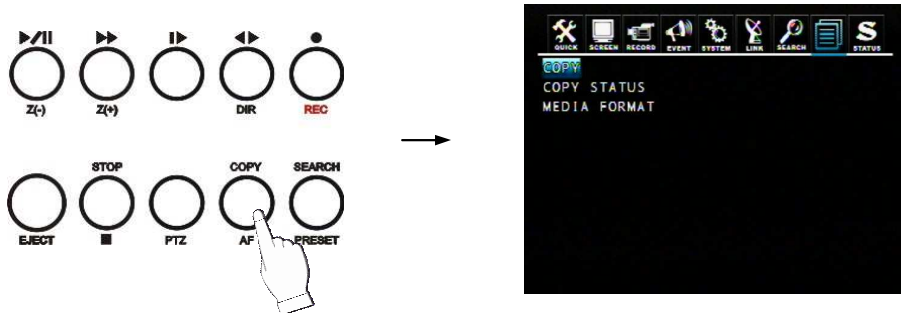


Chapter 8 COPY OPERATION AND MENU SETUP

To copy the DVR record data, you can enter the COPY menu through the main menu or press the COPY button on the front panel.



8.1 Copy

Copy the record data from DVR internal HDD to external storage device.

8.1.1 Copy to USB Storage Device

First, please connect the USB devices (DVD Writer, HDD, Card Reader) to DVR and enter the COPY menu:



MEDIA: Select USB_FRONT

HDD ID: The HDD (HDD0, HDD1) which the record data saved. The default is NORMAL (search data in all HDDs).

CHANNEL: Select to copy signal channel or all channels.

Select the desired MEDIA, HDD ID, CHANNEL, COPY START TIME, COPY END TIME and press the ENTER button to start the copy.

NOTE:

- You can see a password input message. Please input the password by the numeric buttons or press EJECT button to cancel.
- You'll need this password when opening the file in the network viewer.
- When the copy is in process, the copying status (ex. "COPY 30%") will be displayed on the right side of the monitor.
- **Strong recommend you to format the USB storage device before use.**



8.1.2 Copy to DVD±RW

Put the DVD±RW into DVD-ROM and enter the COPY menu:



Select the desired MEDIA (INTERNAL CD-RW/DVD), HDD ID, CHANNEL, COPY START TIME, COPY END TIME and press the ENTER button to start the copy.

NOTE:

- You can see a password input message. Please input the password by the numeric buttons or press ECT button to cancel.
- You'll need this password when opening the file in the network viewer.
- When the copy is in process, the copying status (ex. "COPY 30%") will be displayed on the right side of the monitor.

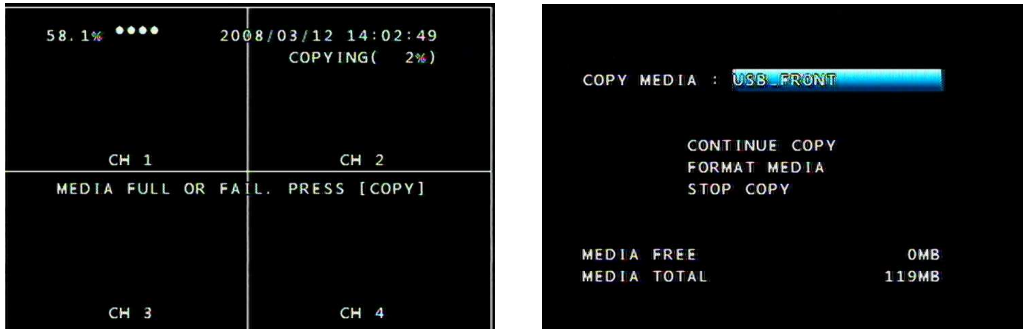
8.1.3 Stop Copy

If you press the COPY button during the COPY process, you'll enter the COPY menu. Select the COPY item, the following screen will appear, press "YES" to stop the COPY process.



8.1.4 Continue Copy

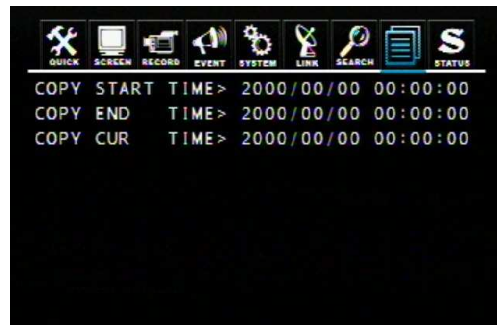
If the storage device full or error occurs during the COPY process, the “MEDIA FULL OR FAIL PRESS [COPY]” message will be shown on the screen. Press COPY button, the following screen will appear:



CONTINUE COPY: After change a new media, the COPY process will be continued.
FORMAT MEDIA: Format the present storage device.

8.2 Copy Status

Review the status of the present COPY process.



COPY CUR TIME: Indicate current copying situation among the total copying data.

8.3 Format Media

To make sure the correctness of COPY, we strong recommend you to format the storage media before use.

NOTE: ALL DATA WILL BE REMOVED AFTER FORMAT.



Select the FORMAT MEDIA and move the cursor to MEDIA FORMAT, then press ENTER to format. The message, “FORMATTING” will be displayed while formatting.

NOTE:

If you don't connect any media, you will see the message, “Fail”.
The first time formatting the media will a take longer.