

PDA

GView V2 is a remote view application for Pocket PC device. It can run on PDA using Windows Mobile 5.0 and 2003.

When GView V2 detects the big screen panel of the mobile phone, images from the connected G-System will be horizontally rotated for a better view. Resolution is set to be CIF by default.

Installing GView

GView V2 is included in the Surveillance System Software CD. This application should be installed in a PDA device with Microsoft Pocket PC operating system.

1. Plug your PDA via USB or COM port to a computer installed with **Microsoft ActiveSync** (The Microsoft ActiveSync program should come with your PDA software CD. Consult your PDA user's manual).
2. Run **Microsoft ActiveSync** in the connected computer. Make sure both the PDA and computer are synchronized.
3. Insert the Surveillance System Software CD to the computer. It runs automatically, and a window pops up.
4. Click **Install V 8.3.0.0 System**, and then click **Microsoft PDA Viewer V2**.
5. Follow the on-screen instructions to complete the installation.

Activating the GView Function

To allow remote access to the GV-System, you must activate the Webcam server with the Mobile function enabled. See Figure 8-8.

Connecting to GV-System

Once GView V2 is installed into your PDA, you can use it to monitor your GV-System. Make sure your PDA has wireless LAN adapter properly in place with access to the Internet.

1. Execute **GView V2** in your PDA.
2. Click the **Connect** button located at the lower left corner. This displays the Login screen.
3. Type the IP address of the GV-System you wish to connect, enter a valid username and password, and then click the **OK** button.

If logging in successfully, you will see video streaming to your PDA. Clicking the **Stop** button can exit the GView application.

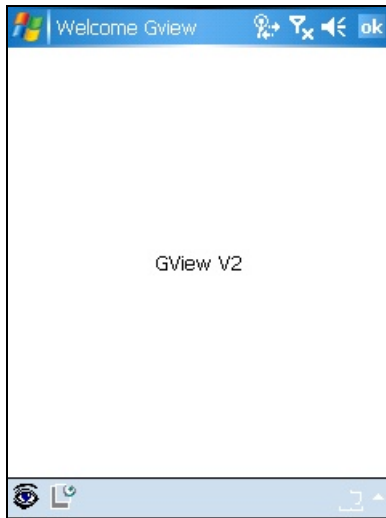


Figure 8-50 Starting GView



Figure 8-51 Entering GV-server Info

Other Functions

The major functions of GView V2 include live video monitoring, PTZ control, zooming control, and snapshot.

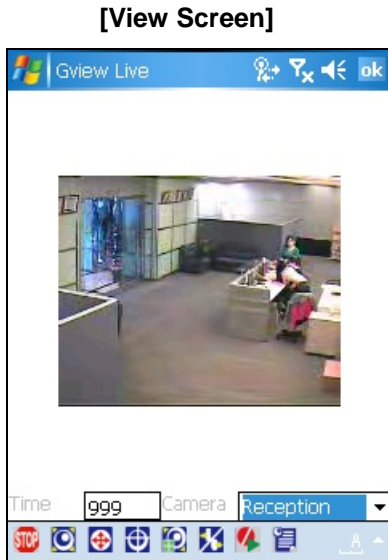


Figure 8-52

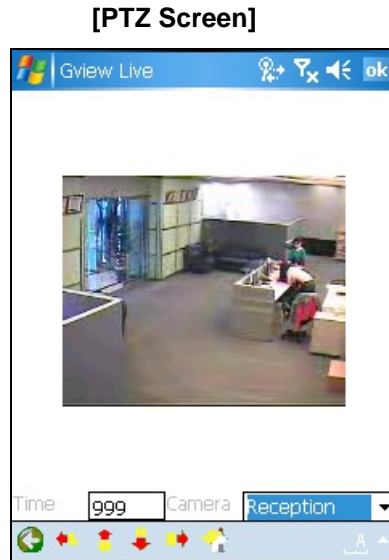



Figure 8-53

Buttons	Description
	Click it to stop the connection.
	Click it for Focus-in and Focus-out control
	Click it for Zoom-in or Zoom-out control.
	Click it to select the camera-preset positions.
	Click it to adjust the image quality.
	Click it for I/O Module Setting or to force outputs.
	Click it to start or stop recording.
	Click it to display the camera status.
Time <input type="text" value="999"/>	The supervisor is given the highest priority to control the PTZ camera and won't be restrained by 60-second time limit. When the supervisor logs in, the Timer shows 999.
Reception ▾	Use this drop-down list to switch cameras.
	Click it to return to the previous page.
	Use these buttons to control left, up, down and right of the PTZ cameras.
	Click it to return to home.

Viewing and Controlling I/O Devices

To view and control the connected I/O devices, select the desired camera and click the  button (Figure 8-52).

[I/O Monitoring Setting / Monitoring]



Figure 8-54

The number on the toolbar indicates the connected module. To view and control the input and output devices, click the number button.

[I/O Setting]



Figure 8-55

“1”: displays the status of triggered input devices. See Figure 8-54.

“0”: displays the connected output devices. See Figure 8-55.

[Input/ Output Devices]

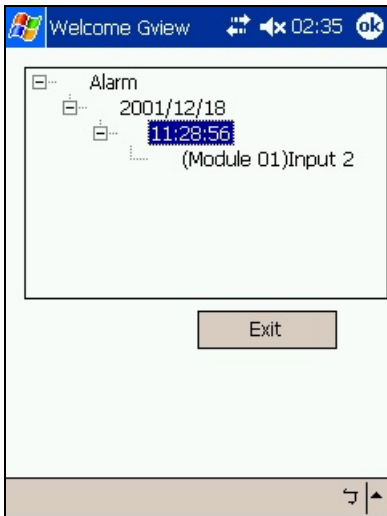



Figure 8-56 Input Devices



Figure 8-57 Output Devices

On the bottom toolbar of the Output Devices screen, the numbers indicates the connected output devices. Click the desired number to force the output.

[Camera Status]

To view the camera status, click the  button (Figure 8-58).

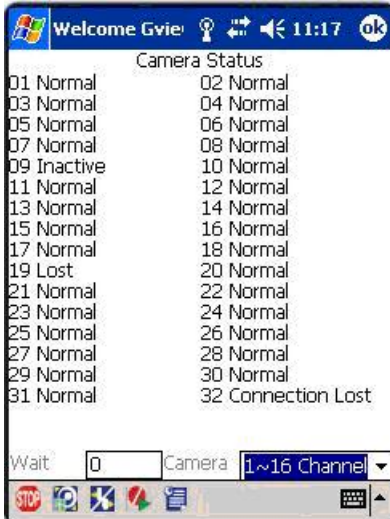


Figure 8-58

This screen displays the status of camera activity. Three messages indicate the current camera status:

- **Normal:** The camera is turned on and not recording.
- **Inactive:** The camera is turned off.
- **Recording:** The camera is recording.